

ventus S1evo³ SUV

Tyre Structure

Tread Compound

HSSC (Highly Enriched Synthetic Silica Compound) is a compound of new technology, in which the highly purified and quality silica compound is vulcanised at low temperatures for twice the duration compared to regular tyres. This allows for the increased blending between molecules that, in turn, secure a solid driving performance and improved mileage.



High Strength Reinforcement Belt

Tyre strength has been increased to respond to high levels of initial output and initial acceleration.

Strong Jointless Bead Wire

By increasing the binding force between the wheel and the joint, even with high initial acceleration, the tyre will always be attached to the wheel.



ventus S1evo³ SUV

Powerful performance and superior handling for luxury SUVs



Hankook Tyre UK Ltd.

Fawsley Drive, Heartlands Business Park, Daventry, Northamptonshire, NN11 8UG, UK.

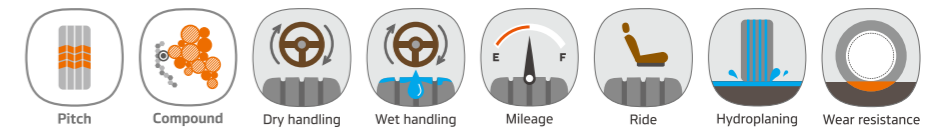
T. +44 (0)1327 304100 F +44 (0)1327 304110

hankooktire.com/uk

201130_K127A

ventus S1evo³ SUV

Powerful performance and superior handling for luxury SUVs



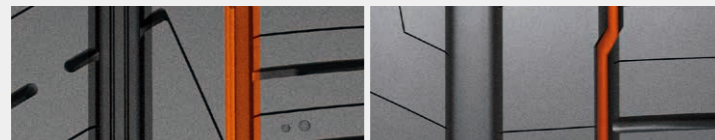
Benefits and Technology

Handling

A Interlocking groove

Ventus S1 evo3 SUV is equipped with interlocking outside grooves to secure wet grip and prevent hydroplaning on slick surfaces. This reinforces its performance on wet roads and cornering in the rain, without compromising dry handling performance.

* Technology Patent: 10-2018-0109541



Straight groove

Interlocking groove

Subjective evaluations performed under actual road conditions

Evaluation category (point)	Straight	Interlocking
	ventus S1evo² SUV	ventus S1evo³ SUV
Dry handling	100	106
Wet handling	100	108

B Balanced stiffness

The outer blocks and shoulders of the tyre, where heavy loads and contact pressure are concentrated due to cornering, are expanded. The maximum steering grip force is secured by the dual action of the reinforcement belt, which secures the flat contact surface under any conditions. Additionally, separated kerfs on inner blocks disperse the pressure of a high load SUV. These balanced in and out blocks ensure the dry handling is improved by 6%.



ventus S1evo² SUV

ventus S1evo³ SUV

ventus S1evo²

ventus S1evo³ SUV

Durability

C Profile technology

Compared to the K117A, the outside blocks of the K127A provide wider and more stable grip whilst cornering.



ventus S1evo² SUV

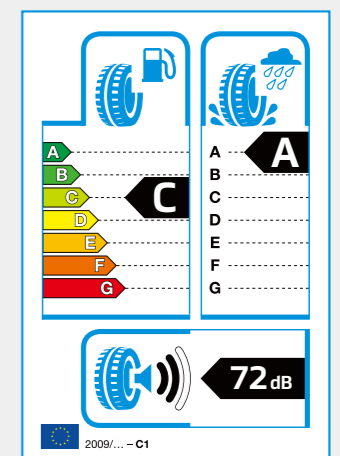
ventus S1evo³ SUV



RR / Wet / PBN

D EU tyre labelling regulations

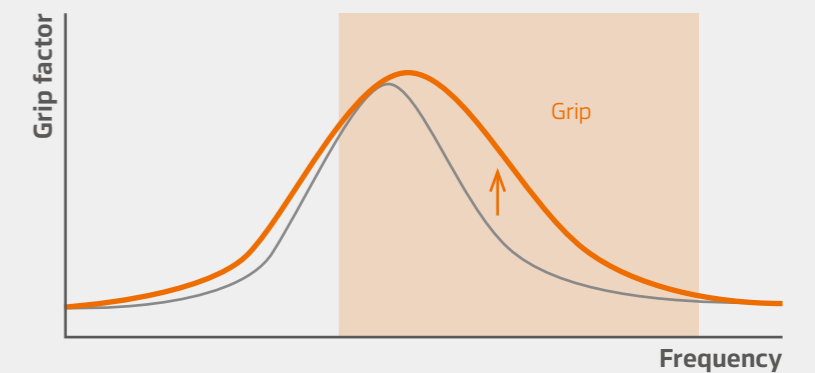
- Fuel efficiency rolling resistance (R.R)
- Wet grip braking performance
- Noise level external rolling noise



* EU label information may vary by size. Please refer to the attached "available size list" for details.

E HSSC (Highly Enriched Synthetic Silica Compound)

HSSC (Highly Enriched Synthetic Silica Compound) is a new compound, in which the highly purified and quality silica is vulcanised at low temperatures for twice the duration compared to regular tyres. This enables the increased blending between molecules that secures a solid driving performance and improved mileage.



The high concentration of silica and newly added substances maximises the grip force under different surface conditions and ranges.

- Advanced silica
- Conventional