

ventus S1evo³

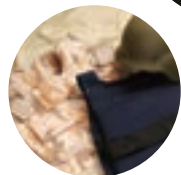
Aramid - strongest fibre on Earth



Sailing boat rope



Racing car tyres



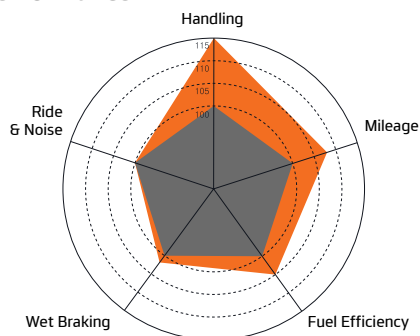
Body armour



Fireproof clothing

Aramid is a high performing super fibre which is why most of its production is used in important technological industries such as the military, aircrafts, aerospace and marine biology. Its specific strength is more than that of iron and steel. Excluding 99% of sulfur substances, aramid is so resistant it can withstand all chemical substances without dissolving or decomposing, and the stability that prevents melting at high temperatures also only carbonises at temperatures over 500°C.

Key performance



■ Conventional ■ ventus S1evo³

*Handling data refers to dry handling data.

We have a variety of OE sizes and inch-up sizes for luxury vehicles

Inch	M.Code	Size	S.S	L.I
18	1024307	215/45R18	Y	93
	1024309	245/45R18	Y	100
	1024320	255/35R18	Y	94
19	1024294	225/35R19	Y	88
	1024289	225/40R19	Y	93
	1024295	235/35R19	Y	91
	1024296	245/35R19	Y	93
	1024290	245/40R19	Y	98
	1024301	255/30R19	Y	91
	1024297	255/35R19	Y	96
	1024291	255/40R19	Y	100
	1024303	275/30R19	Y	96
	1024298	275/35R19	Y	100
20	1024274	245/35R20	Y	95
	1024275	255/35R20	Y	97
	1024281	265/30R20	Y	94
	1024276	265/35R20	Y	99
	1024277	275/35R20	Y	102



Peace of mind guaranteed

Hankook will replace a range of Ventus tyres damaged by road hazards.
* Conditions apply

hankooktire.com/au
[facebook.com/hankook.au](https://www.facebook.com/hankook.au)



HANKOOK TYRE AUSTRALIA
Building A, Level 3, 11 Talavera Rd, Macquarie Park, NSW 2113
Australia Tel: 1300 13 30 30 / 02 9870 1200 | Fax: 02 9870 1201

hankooktire.com/au



ventus S1evo³

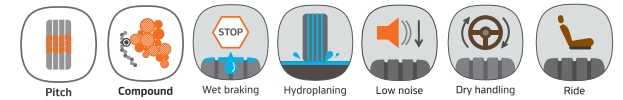


Powerful performance and superior handling for luxury vehicles



THE OFFICIAL TYRE





Handling

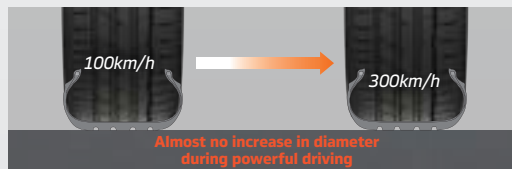
A Aramid hybrid cord

The Aramid, the strongest fibre on Earth, hybrid cord enhances the handling stability of the tyre.

ventus S1evo²

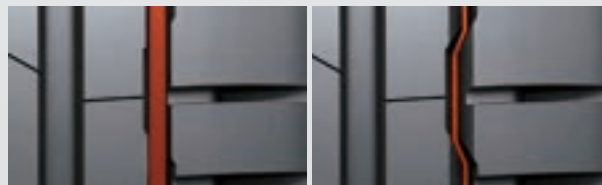


ventus S1evo³



B Interlocking groove

The interlocking outside groove improves wet grip and prevents hydroplaning on slick surfaces.



Straight groove

Interlocking groove

C Highly stiff outside shoulder

The wider outer blocks and shoulders secure the flat contact surface under any conditions.

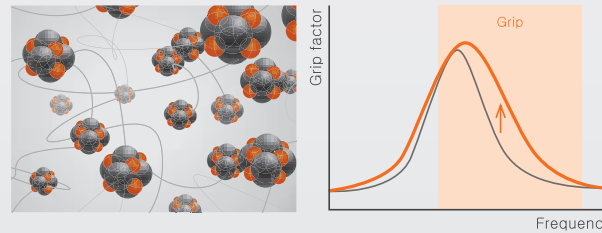


Wet

D HSSC (Highly Enriched Synthetic Silica Compound)

HSSC (Highly Enriched Synthetic Silica Compound) is a new compound, in which the highly purified and quality silica is vulcanised at low temperatures for twice the duration compared to regular tyres.

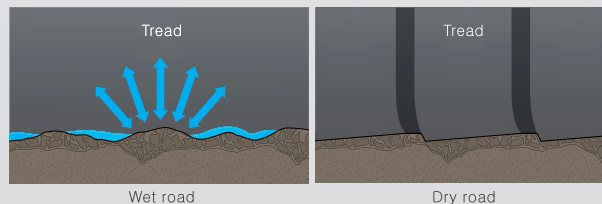
This enables the increased blending between molecules that secures a solid driving performance and improved mileage.



- Filler: Hydrophilic
- Functional group
- Polymer: Hydrophobic

The high concentration of silica and newly added substances maximises the grip force under different surface conditions and ranges.

- Advanced silica
- Conventional



Through the use of advanced silica compounds, performance on all types of wet and dry surfaces has been maximised.

Ride & Noise

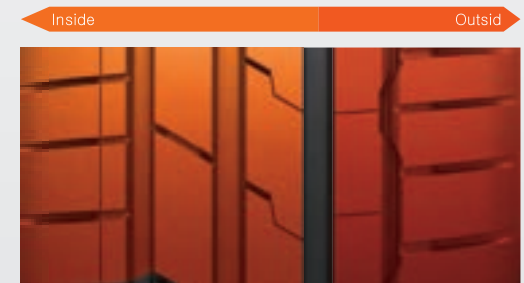
E Inside & outside dual pitch

Inside

Hydroplaning and wet braking are improved by increasing the number of inner pitches (block) to secure the gaps for enhanced drainage.

Outside

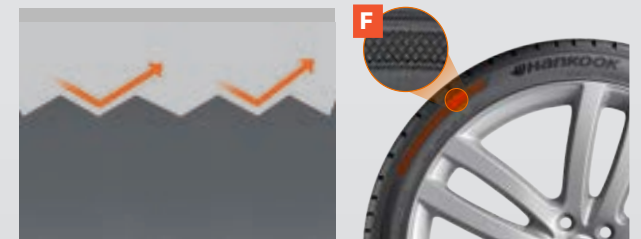
The number of outer pitches is optimised to secure the steering grip performance and to reduce pattern noise.



F Sidewall design

Reinforced sidewall block stiffness

The reinforced block stiffness is produced through the connection of lattice structured interlocking units.



Improved thermal circulation, air permeability and ride comfort

Improved effectiveness of thermal circulation and air permeability through the use of repetitively structured units, which are more than double the conventional serration patterns.