

MAXXIS®



**ALL TERRAIN
JUST GOT
WILDER.**

**RAZR AT
AT811**



**THE NEW AT811 RAZR AT.
APPROACH WITH CAUTION.**

We still can't tame the Razer. But we have introduced a few more road manners. Not that you can tell by looking at it.

The most aggressive looking All Terrain handles everything you throw at it. On road it drives like a beauty but venture off and it snarls, ready to eat rocks and spit sand.

Approach with caution. Drive with everything you've got.



MAXXIS® ARMOUR PLY

The AT811's secret to extreme durability

Dual-cord casing ply features intertwined reinforcement fibres, dramatically improving casing strength for superior durability and toughness.

SIZE	PLY RATING	LOAD / SPEED
31x10.50R15 LT	6PR	109Q
LT 235/85R16	10PR	120S
LT 225/75R16	10PR	115S
LT 245/75R16	10PR	120S
LT 265/75R16	10PR	123R
LT 285/75R16	10PR	126R
245/70R16		111T
265/70R16		112T
LT 225/70R17	10PR	115S
LT 265/70R17	10PR	121S
LT 265/65R17	10PR	120S
265/65R17		112T
LT 265/60R18	10PR	119S
275/55R20		117T
265/50R20		111S

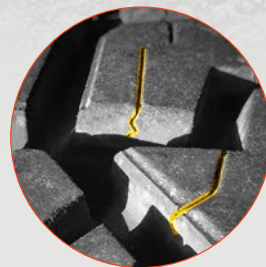
E & OE. Specs subject to change at any time.



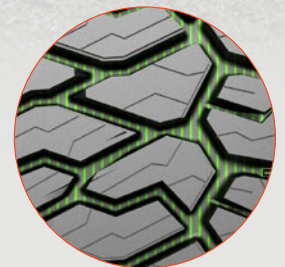
New Razer All Terrain tread pattern provides High Traction All Terrain off-road grip as well as very quiet running around town and on gravel.



Multi-angled tread sipes provide extra biting edges and allow the tyre to mould to the terrain in rough conditions.



3D tread sipes allow the tread blocks to work independently to allow extra biting edges when the vehicle is off road, but lock together under force for more stable braking.



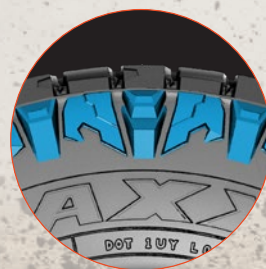
High tensile nylon cap ply under the tread keeps the vehicle stable and high speeds and helps to resist punctures.



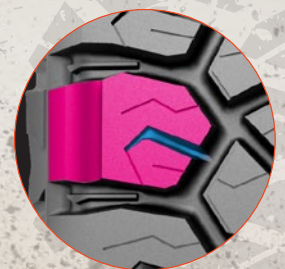
Stepped chamfer on tread blocks for smoother on-road running and stable braking under force.



Extra damage-resistant tread compound to resist cutting, tearing and chunking off-road.



3-Ply sidewall with wrap-over Debris-shield damage-resistant blocks help the tyre to resist sidewall damage.



Dual-part shoulder tread block with extra deep clearance groove for multiple extra gripping edges.