

MAXXIS®

INTRODUCING...
THE NEW MAXXIS

MT772 RAZR MT

THE EXPLORER. UNTAMED.

The new-generation MT772 Razer MT brings together all of Maxxis' off-road and racing technology and expertise into a tyre that stands up to every challenge it encounters.

- Maximum offroad traction
- New debri-shield sidewall design
- Maximum tread block tear resistance
- Superior durability and toughness
- Surprisingly quiet on-road running

ALWAYS UP FOR THE CHALLENGE

www.maxxistyres.co.nz



MT772 RAZR MT

THE EXPLORER. UNTAMED.



THE MAXXIS ARMOUR PLY

The MT772's secret to extreme durability

Dual-cord casing ply features intertwined reinforcement fibres, dramatically improving casing strength for superior durability and toughness.

SIZE	PLY RATING	LOAD / SPEED	TREAD DEPTH (MM)
31x10.5R15	6PR	109Q	15.5
32x11.50R15	6PR	113Q	15.8
33x12.50R15	6PR	108Q	15.8
35x12.50R15	6PR	113Q	15.8
245/75R16	10PR	120/116Q	15.5
265/75R16	10PR	123/120Q	15.5
285/75R16	10PR	126/123Q	15.8
315/75R16	10PR	127/124Q	15.8
265/70R16	10PR	121/118Q	14.6
265/70R17	10PR	121/118Q	15.5
285/70R17	10PR	121/118Q	15.8
305/70R17	10PR	121/118Q	15.8
265/65R17	10PR	120/116Q	14.6
275/65R18	10PR	123/120Q	15.8
35x12.50R18	10PR	123Q	15.8
275/65R20	10PR	126/123Q	15.8
295/55R20	10PR	123/120Q	15.8
265/50R20		111Q	12
285/50R20		116Q	12.3
35x12.50R20	12PR	125Q	15.8
37x13.50R20	10PR	127Q	15.8
37x13.50R22	10PR	123Q	15.8

www.maxxistyres.co.nz



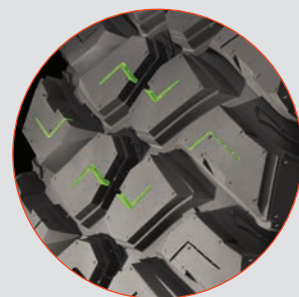
Deeply sculpted tread blocks with two-stepped design for maximum off-road traction while retaining a quieter ride.



New off-road tread compound with chemical fillers to resist cutting, tearing, and chunking.



Stair-shaped shoulder block design for increased traction performance.



Siped tread blocks for maximum grip on and off road.



Razor mud and stone ejectors on shoulder groove for extra grip and reduced tyre damage.



3-Ply sidewall with debris-shield damage-resistant blocks for maximum durability and puncture resistance.



High-tensile nylon cap ply for high speed stability.



Tread block arrangement designed for surprisingly quiet running on road.