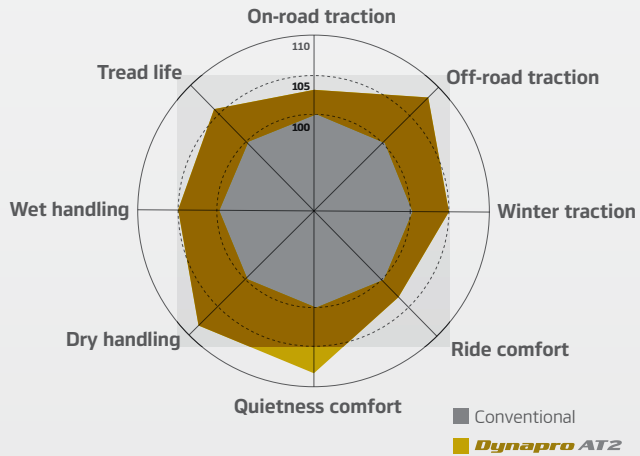


# Dynapro AT2

The new all-round-terrain delivers superior balanced performance

Improvement in performance compared to predecessor.



## Available sizes and specifications

Inch	M.Code	Description	S.S	L.I	
15	2020909*	215/75R15	S	100/97	
	1023546	215/80R15	T	102	
	1023440*	235/75R15	T	109	
	1023550*	255/70R15	T	108	
	2020912*	265/70R15	S	109/105	
	2020949*	30X9.50R15	S	104	
	2020950*	31X10.50R15	S	109	
	2020847*	33X12.50R15	S	108	
16	2020977*	205R16	R	110/108	
	1024100*	215/70R16	T	100	
	1023441*	225/70R16	T	103	
	2020959	225/75R16	S	115/112	
	1023547	235/60R16	T	100	
	1023443*	235/70R16	T	109	
	2020953	235/85R16	S	120/116	
	1023445*	245/70R16	T	111	
	2020954*	245/75R16	S	120/116	
	1023448*	255/70R16	T	111	
	1023804*	265/70R16	T	112	
	2020955*	265/70R16	S	117/114	
	1023805*	265/75R16	T	116	
	2021152*	275/70R16	S	119/116	
17	2020871*	285/75R16	S	126/123	
	2021153*	225/70R17	S	110/107	
	1023451*	235/65R17	T	104	
	1023453*	245/65R17	T	111	
	2020956*	245/70R17	S	119/116	
	1023455*	255/65R17	T	110	
	1023806*	265/65R17	T	112	
	2020911*	265/65R17	S	120/117	
	2020921*	265/70R17	S	121/118	
	1024860*	285/65R17	T	116	
	2020936*	285/70R17	S	121/118	
	18	1023548	235/60R18	T	103
		1023558	265/60R18	T	114
		1023807	265/65R18	T	114
2020854		265/70R18	S	124/121	
2020939		275/65R18	S	123/120	
2021159*		285/60R18	S	118/115	
2020941		285/65R18	S	125/122	
19		1023866	255/55R19	H	111
		1025229	265/50R20	T	111

\* : Outlined white letter

[hankooktire.com/au](http://hankooktire.com/au)  
[facebook.com/hankook.au](https://facebook.com/hankook.au)

**HANKOOK TYRE AUSTRALIA**  
 Building A, Level 3, 11 Talavera Rd, Macquarie Park NSW 2113  
 Australia Tel: 1300 13 30 30 / 02 9870 1200 | Fax: 02 9870 1201

**HANKOOK**  
 driving emotion



**Dynapro AT2**  
 The new standard  
 for the All-Terrain segment



## Strong all-round-terrain traction

### A Multi-way groove and sipes

Multi-way tread grooves and sipes are arranged to create better traction in any direction.



■ Groove direction  
■ Sipe direction

### B Biting block edge

Extra biting edge provides more traction in mud and snow condition.



### C Locking shoulder lugs

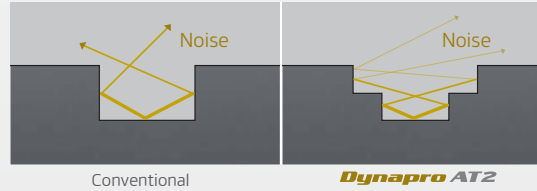
Protruding mix of two to one shoulder lugs provide additional off-road traction.



## Maximum quiet ride

### D Step block edge technology

The step block edge technology provides a sound barrier that reduces road noise, specially from the groove.



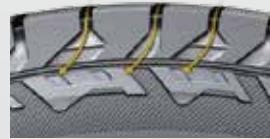
### E Block-chain control system

Tie bar between shoulder blocks reduce noise and gives you more comfort by minimising the movement between shoulder block.



### F Aero shoulder technology

The passage at the shoulder naturally radiates the road noise.



## Longer tread life

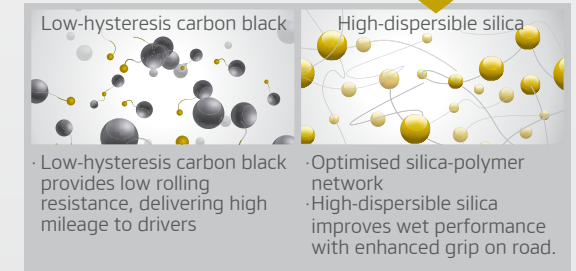
### G Long wear tread rubber

Specifically formulated compound increases mileage and reduces chip & cut for gravel road endurance.



Conventional

Dynapro AT2



Low-hysteresis carbon black

High-dispersible silica

· Low-hysteresis carbon black provides low rolling resistance, delivering high mileage to drivers

· Optimised silica-polymer network  
· High-dispersible silica improves wet performance with enhanced grip on road.

### H Wider tread and advanced foot print

Results in more evenly distributed stress, leads to longer tread life and uniform wear.

