



**HANKOOK**  
driving emotion

***Dynapro AT2 Xtreme***

*Tough in all terrains*



# Dynapro AT2 Xtreme

## Technical Profile

Tread width      Inch  
**215-315**      **15-22**

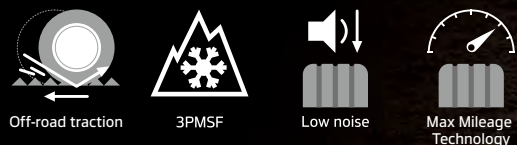
Series      Speed symbol  
**45-85**      **S, T**

## Performance Rating

	<i>Dynapro HP2</i>	<i>Dynapro HT</i>	<i>Dynapro AT2</i>	<i>Dynapro XT</i>	<i>Dynapro MT2</i>
Wet	4	4	<b>3.5</b>	4	3.5
Dry	4	4	<b>4</b>	4	3.5
Snow	4	4	<b>5</b>	4.5	3.5
Ride & Comfort	5	4.5	<b>4</b>	3.5	3
Noise	5	4.5	<b>4</b>	3.5	3
Off-Road Traction	2.5	2.5	<b>4</b>	4.5	5
Wear	5	4.5	<b>5</b>	4	3.5

\* Ratings above is a general guideline to compare among internal Hankook products.

## Applied Technology & Tire Performance





The Dynapro Family

# THE DYNAPRO FAMILY

***Dynapro HP2***

**TOURING ALL-SEASON**



***Dynapro HT***

**HIGHWAY ALL-SEASON**



***Dynapro AT2 Xtreme***

**ALL TERRAIN**



***Dynapro XT***

**RUGGED TERRAIN**



***Dynapro MT2***

**MUD TERRAIN**





Key Benefits



**ALL TERRAIN  
TRACTION**



**QUIET AND  
COMFORTABLE RIDE**



**UNRIVALED  
LONGEVITY**



## ALL TERRAIN TRACTION

Set your vehicle free to drive in any road condition.

# POWERED-UP

### Aggressive Shoulders and Sidewall

Cross combined scoops applied on shoulder to enhance off road traction.

High depth sidewall blocks provide protection and prevent cuts in off road conditions.







### Multi-directional Grooves and Sipes

Provides better traction in any direction.

## ALL TERRAIN TRACTION

Set your vehicle free to drive in any road condition.

# NEVER LOSE GRIP IN ANY DIRECTION





## ALL TERRAIN TRACTION

Set your vehicle free to drive in any road condition.

# CONQUER THE SNOW



### Biting Block Edges

Provides more traction and excellent snow performance.  
3 Peak Mountain Snowflake qualified for severe snow conditions.



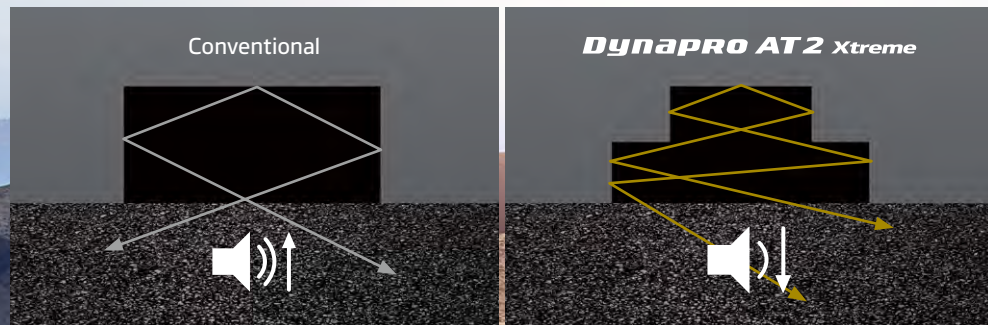
## QUIET AND COMFORTABLE RIDE

No need to be aggressive all the way. Enjoy the peacefulness when you're on road.

# ENHANCED QUIETNESS

### Staged Block Edges

Creates a sound barrier that reduces road noise.



### Tie-bars

Stabilizes tread blocks to prevent noise and optimize movement for a more comfortable ride.



## LONGER TREAD LIFE

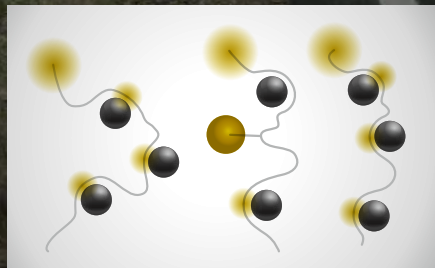
Make your journey longer, further, and farther.

# UNRIVALED LONGEVITY

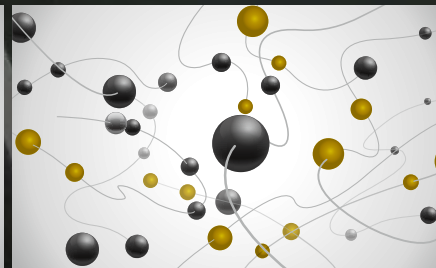
## Second-to-none Mileage Warranty

Backed up with the \*best mileage warranty in the all-terrain segment, the Dynapro AT2 Xtreme's mileage is significantly enhanced by our Max mileage technology and a durable compound which evenly distributes force during acceleration, braking, and cornering.

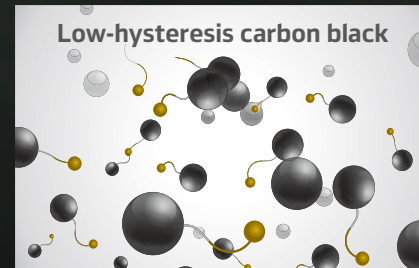
\* compared to all-terrain tires currently available in the US Market



Conventional



**Dynapro AT2 Xtreme**



- High-dispersible silica
- Low-hysteresis carbon black



# AVAILABLE SIZES

S-Code	Size	Inch	LI / SS	Sidewall	PR (Load Range)	Measuring Rim	Rim Width Range	Maximum					Overall Diameter	Section Width	Tread Width	Tread Depth	Revs/ Mile	Weight	UTQG
								Air	Load										
1029781	235/75R15 XL	15	109T	RWL	4 (B)	6.5	6.0-8.0	50	(S)	2,271	(D)	-	28.8	9.0	7.0	12.0	722	32.1	660/A/B
2021629	31X10.50R15	15	109S	RWL	6 (C)	8.5	7.0-9.0	50	(S)	2,270	(D)	-	30.5	9.9	8.0	15.0	686	42.5	
1029783	245/75R16	16	111T	RWL	4 (B)	7.0	6.5-8.0	51	(S)	2,403	(D)	-	30.4	9.6	7.3	12.0	682	36.6	660/A/B
1029782	265/70R16	16	112T	RWL	4 (B)	8.0	7.0-9.0	51	(S)	2,469	(D)	-	30.6	10.6	8.2	12.0	678	38.5	660/A/B
2021626	LT225/75R16	16	115/112S	BSW	10 (E)	6.0	6.0-7.0	80	(S)	2,680	(D)	2,470	29.2	8.7	6.7	14.5	716	39.4	
2021671	LT235/85R16	16	120/116S	BSW	10 (E)	6.5	6.0-7.5	80	(S)	3,042	(D)	2,778	31.6	8.6	6.6	16.0	661	44.3	
2021630	LT245/75R16	16	120/116S	RWL	10 (E)	7.0	6.5-8.0	80	(S)	3,042	(D)	2,778	30.4	9.5	7.3	14.5	688	44.3	
2021669	LT265/75R16	16	123/120S	BSW	10 (E)	7.5	7.0-8.0	80	(S)	3,415	(D)	3,085	31.7	9.9	8.0	15.0	660	47.4	
2021639	LT285/75R16	16	126/123S	RWL	10 (E)	8.0	7.5-9.0	80	(S)	3,750	(D)	3,415	32.8	10.7	8.6	15.0	637	59.8	
1029784	245/65R17 XL	17	111T	RWL	4 (B)	7.0	7.0-8.5	50	(S)	2,403	(D)	-	29.6	10.0	7.7	12.0	702	35.3	660/A/B
1029786	245/70R17	17	110T	RWL	4 (B)	7.0	6.5-8.0	51	(S)	2,337	(D)	-	30.5	9.7	7.5	12.0	681	37.0	660/A/B
1029785	255/70R17	17	112T	RWL	4 (B)	7.5	6.5-8.5	51	(S)	2,469	(D)	-	31.1	10.2	7.8	12.0	669	38.6	660/A/B
1029787	265/65R17	17	112T	RWL	4 (B)	8.0	7.0-9.0	51	(S)	2,469	(D)	-	30.5	10.9	8.3	12.0	681	39.3	660/A/B
1029842	265/70R17	17	115T	RWL	4 (B)	8.0	7.0-9.0	51	(S)	2,679	(D)	-	31.6	10.6	8.2	12.0	657	39.6	660/A/B
2021670	LT235/80R17	17	120/117S	BSW	10 (E)	6.5	6.0-7.5	80	(S)	3,085	(D)	2,835	31.7	8.8	6.6	16.0	659	44.3	
2021633	LT245/70R17	17	119/116S	RWL	10 (E)	7.0	6.5-8.0	80	(S)	3,000	(D)	2,755	30.5	9.6	7.6	15.0	685	45.4	
2021632	LT245/75R17	17	121/118S	RWL	10 (E)	7.0	6.5-7.5	80	(S)	3,195	(D)	2,910	31.6	9.5	7.3	14.5	662	45.6	
2021667	LT265/70R17	17	121/118S	RWL	10 (E)	8.0	7.0-8.5	80	(S)	3,195	(D)	2,910	31.6	10.6	8.2	14.5	661	48.8	
2021640	LT285/70R17	17	121/118S	RWL	10 (E)	8.5	7.5-9.0	80	(S)	3,195	(D)	2,910	32.7	11.2	8.7	15.0	639	58.7	



# AVAILABLE SIZES

S-Code	Size	Inch	LI / SS	Sidewall	PR (Load Range)	Measuring Rim	Rim Width Range	Maximum			Overall Diameter	Section Width	Tread Width	Tread Depth	Revs/ Mile	Weight	UTQG		
								Air	Load										
1029780	255/70R18	18	113T	BSW	4 (B)	7.5	6.5-8.5	51	(S)	2,535	(D)	-	32.0	10.2	7.8	12.0	648	39.4	660/A/B
1029779	265/60R18 XL	18	114T	BSW	4 (B)	8.0	7.5-9.5	50	(S)	2,601	(D)	-	30.4	11.0	8.3	12.0	682	38.9	660/A/B
1029959	265/65R18	18	114T	BSW	4 (B)	8.0	7.5-9.5	51	(S)	2,601	(D)	-	31.5	10.9	8.3	12.0	660	40.1	660/A/B
1029958	275/65R18	18	116T	BSW	4 (B)	8.0	7.5-9.5	51	(S)	2,756	(D)	-	32.1	11.1	8.7	12.0	647	41.5	660/A/B
2021634	LT265/70R18	18	124/121S	BSW	10 (E)	8.0	7.0-9.0	80	(S)	3,525	(D)	3,195	32.6	10.5	8.2	14.5	641	50.2	
2021642	LT275/65R18	18	123/120S	BSW	10 (E)	8.0	7.5-9.0	80	(S)	3,415	(D)	3,085	32.1	11.0	8.7	14.0	652	61.1	
2021641	LT275/70R18	18	125/122S	BSW	10 (E)	8.0	7.0-8.5	80	(S)	3,640	(D)	3,305	33.1	10.8	8.4	14.5	631	63.1	
1029777	275/60R20	20	115T	BSW	4 (B)	8.0	7.5-9.5	51	(S)	2,679	(D)	-	32.9	11.4	8.7	12.0	631	43.9	660/A/B
2021636	LT275/55R20	20	115/112S	BSW	8 (D)	8.5	7.5-9.5	65	(S)	2,680	(D)	2,470	31.9	11.6	8.7	14.0	656	55.2	
2021638	LT275/60R20	20	119/116S	BSW	8 (D)	8.0	7.5-9.5	65	(S)	3,000	(D)	2,755	32.9	11.1	8.7	14.0	635	57.1	
2021635	LT275/65R20	20	126/123S	BSW	10 (E)	8.0	7.5-9.5	80	(S)	3,750	(D)	3,415	34.0	11.2	8.7	14.0	614	64.6	
2021637	LT285/55R20	20	122/119S	BSW	10 (E)	9.0	8.0-10.0	80	(S)	3,305	(D)	3,000	32.4	11.8	9.0	16.0	646	63.6	
1029778	305/45R22 XL	22	118T	BSW	4 (B)	10.0	9.5-11.5	50	(S)	#N/A	(D)	-	32.7	12.1	10.4	12.0	635	46.1	660/A/B